

# Official Artist of the Boy Scouts of America



The work of sculptor and painter, Susan Norris, has a wide range of styles, technique and subject matter. Her art is inspired by the natural world, her love of animals, and sometimes mixing realism with humor, which she calls, "animal fiction". At 19, Norris entered her first juried show, an outdoor art and craft fair. At that time she was only working in charcoal and pencil drawings of animals, and had not experimented with color renderings. She was delighted when she sold 2 of her large framed drawings, and from that moment she decided that maybe she could pursue her dream of being an artist. Later on as a young wife and mother, she continued to work on improving her skills and started to explore watercolor, gouache, acrylics and oils. It wasn't until around 1990 that she was commissioned to do her first sculpture in bronze. It was a portrait of a man and his hunting dog.

Sculpture took a back seat for awhile, as in 1994 Norris made a big change in her life when she left Ohio, and moved to New Mexico.

In 2011, looking for the next large sculpture commission, she remembered something a mentor had told her about how to create your own commission. He said, "the first place you should look is in your own backyard." The first place that came to mind was the Philmont Scout Ranch, in Cimarron, NM. So, one afternoon in September, she made an appointment to visit the ranch and have a look see. The last stop on the tour was the Ernest Thompson Seton Memorial Library. Upon entering the library, Norris was immediately struck by the portrait of E.T. Seton. On the walls were many drawings and paintings by E.T. Seton, but one in particular caught her eye, and she couldn't stop staring at it. It was a very, very large painting of wolves with a graphic message. "Triumph of the Wolves" was the title, and it was at that moment that she knew that it would be life changing. "I call it an epiphany moment, a kind of knowing that I had found my purpose. I left the museum in tears, because I just KNEW what I wanted to do.

A year later, she was awarded the contract to sculpt her three models, in larger than life bronze. E.T. Seton, a 1915 Scout, and Lobo the wolf. Lobo was a very important part of Seton's story and his connection to New Mexico, and also an important factor in a major change in Seton's own life. "As Lobo changed Seton's life, so Seton changed mine."

Susan is now the official artist for the Scouts BSA, and has made her home in Cimarron, NM, near the Philmont Scout Ranch. The three, larger than life bronze sculptures that began as a vision to honor a man she feels such a connection to, are now gracing the entrance of the National Scouting Museum.

Besides sculpture, Susan is still a prolific painter in traditional oils of southwest landscapes, wildlife, and portrait work, both human and animal. She has painted several iconic landmarks from the Philmont Scout Ranch, which are available as limited edition giclee's, and are available for purchase through the National Scouting Museum Gift Shop.

You can purchase limited edition giclée prints (framed and unframed) of Susan's beautiful Philmont paintings, the award sculptures (Silver Beaver, Silver Antelope & Silver Buffalo recipients), or commission Susan to create custom artwork for your council or region by contacting the National Scouting Museum Gift Shop at 575-376-1136 or email [philmont.museums@scouting.org](mailto:philmont.museums@scouting.org).

# Susan Norris





# Own the artwork that started it all, These bronze statues tell the Susan Norris story.

Susan's journey to become the National Artist of the Boy Scouts of America began with these two statues, now on permanent display in the plaza in front of the National Scouting Museum - Philmont Scout Ranch. Now you can own your own desk-top size of each of the beautiful pieces of art.

King of the Currumpaw and The Wonder of Discovery are custom ordered pieces and make an excellent way to begin your collection of Susan Norris sculptures. Call the National Scouting Museum for additional information and pricing.



The Wonder of Discovery  
ET Seton and a Scout in a 1915 uniform



King of the Currumpaw  
Lobo - "The wolf that changed America"

To order these bronze sculptures, please contact the  
National Scouting Museum - Philmont Scout Ranch.  
[philmont.museums@scouting.org](mailto:philmont.museums@scouting.org) or call 575-376-1136

# **Celebrate Your Wood Badge Critter, With Giclee prints of original artwork.**

Your identification with your Critter is part of the fun and excitement of Wood Badge. Capture that excitement with a custom piece of Susan Norris artwork. Each painting captures the majesty and essence of these Wood Badge animals. Through Susan's eye and paintbrush, you will be taken back to that first moment you discovered your connection to your patrol and your critter.

These paintings are reproduced as Limited Edition, Giclee canvas prints, and are purchased unframed from the National Scouting Museum.

Each Limited Edition print is available in two sizes, 8"x10" and 16"x20". As an added bonus, each print is signed by Susan. Don't miss this opportunity to capture more Wood Badge memories with the original Susan Norris paintings.

**8"x10" \$80**

**16"x20" \$159**



To order one or more of these limited edition, Giclee Prints, please contact the National Scouting Museum - Philmont Scout Ranch.  
[philmont.museums@scouting.org](mailto:philmont.museums@scouting.org) or call 575-376-1136

# Limited Edition Bronze Statues to Recognize Silver Buffalo, Silver Antelope, Silver Beaver Recipients



## Silver Antelope

Limited Edition of 300  
Includes walnut base and brass  
name plate up to 3 lines of text  
10" Tall

**\$900**

What better way to recognize recipients of these prestigious awards than with a Limited Edition, Susan Norris, Bronze statue.

Show your appreciation to these key volunteers in a manner they can display in their home or office.



## Silver Beaver

Limited Edition of 500  
Includes cherry base and brass  
name plate up to 3 lines of text  
6" Tall

**\$399**



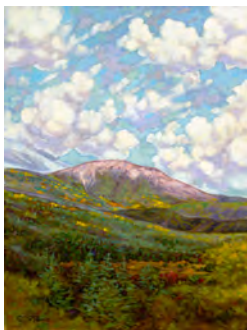
## Silver Buffalo

Limited Edition of 100  
Includes walnut base and brass name plate  
up to 3 lines of text  
10" Tall

**\$1,600**

To order these bronze statues - proof of award is required to order - please contact the National Scouting Museum - Philmont Scout Ranch.  
[philmont.museums@scouting.org](mailto:philmont.museums@scouting.org) or call 575-376-1136

# Bring the Iconic Views of Philmont into Your Home or Office, It's easier than you think.



Baldy Mountain



Lover's Leap

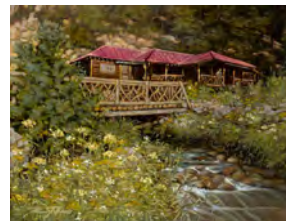
Re-live your time on the Ranch with these one-of-a-kind paintings of several Philmont images. Whether it is a view from the trail, or a memory from your time in the backcountry, Susan's paint-brush has transformed these icons into a vision that will keep you coming HOME each time you see them.

These paintings are reproduced as a Limited Edition, Giclée print, and can be purchased either framed or unframed from the National Scouting Museum.

As a Limited Edition offering, only 60 of each print are available. The Giclées measure 14" x 20" (approximate size, varies by print), is numbered, and signed by Susan.



The Tooth



Fish Camp



Philmont Christmas



Philmont Buffalo



Chase Ranch Carriage House

**Framed Print**  
**\$600**

**Unframed Print**  
**\$400**

To order one or more of these limited edition, Giclée Prints, please contact the National Scouting Museum - Philmont Scout Ranch.

philmont.museums@scouting.org or call 575-376-1136

# How Would Your Council Like to Turn a \$3,000 Investment into \$350,000? Here's How One Council Did Just That.

The 90th Anniversary of Ten Mile River Scout Camps, in the Greater New York Councils, was on August 7, 2017. To celebrate the occasion, the Council wanted to do something special. Commissioning a piece of custom art seemed like a viable option.

At the 2016 Top Hands meeting, Bob Madsen, Director, Support Services & CFO - GNYC, met with Susan Norris to discuss the idea of a painting that would be auctioned off to cover the costs of the investment, with reprints that will be presented to recognize 2 - 4 people annually at the Ten Mile River Hall of Fame event, which serves as a fund raiser for the camps.

The scene they selected was of Indian Cliffs, which for the last 94 years has identified the camps in patches, logos and other scouting memorabilia. Susan painted the scene from a series of photographs including a late 1960s image, depicting the Native America in his regalia overlooking the river below.

Susan delivered the final painting to the council at the end of July 2017, in time for their event.



At the event the painting was placed on display and a silent auction was held. The winning bid of \$3,300 more than covered the cost of the painting.

The gentleman with the winning bid was so excited by his purchase, he made an additional donation to the Camps of \$50,000, and is now a member of their board, with a 3-year total giving of \$350,000.

Currently The Council is looking to commission a second piece of art to commemorate the 25th Anniversary of Johnny Reeves Cub World.

For more information on commissioning Susan to complete a unique work of art for your council, please contact the National Scouting Museum - Philmont Scout Ranch.  
philmont.museums@scouting.org or call 575-376-1136



Own a Limited Edition Giclée print of several iconic Philmont views. Baldy Mountain, The Tooth of Time, Lover's Leap, and Fish Camp are just a few of the Philmont locations transformed by Susan's paintbrush. The prints measure 14" x 20" (approx. varies by print) and can be purchased either framed or unframed from the National Scouting Museum Gift Shop.

## LIMITED EDITION GICLÉE PRINTS OF PHILMONT LANDMARK PAINTINGS



## MONUMENTAL BRONZE SCULPTURES

Commission Susan Norris to sculpt a one-of-a-kind statue to commemorate important people, places or events in your council or camps.

The "Wonder of Discovery" is a 1.25 life-size bronze sculpture, commissioned by The Boy Scouts of America, and graces the entrance to the National Scouting Museum - Philmont Scout Ranch, Cimarron, NM



Recognize recipients of the Silver Buffalo, Silver Antelope and Silver Beaver

with these Limited Edition Bronze Statues Commissioned by Boy Scouts of America



"Silver Beaver"



"Silver Antelope"



"Silver Buffalo"

## AWARD STATUES



"As an artist it is not my intention to make a statement or cause the viewer to go inward to find a greater meaning."



"With our lives sometimes being so serious, I want to encourage the joy that is supposed to be our human experience."

## LOCAL COUNCIL COMMISSIONED ARTWORK

Artist Susan Norris, The Official Artist of the Boy Scouts of America, can be commissioned to create unique works of art for your local council or region.

Recognize donors, acknowledge award recipients, memorialize people, locations and events, fund raising opportunities, these are just some of the many ways commissioned artwork by Susan Norris can help your local council.

Recently, Susan created a one-of-a-kind piece of art for the Ten Mile River Scout Camps in New York as part of their 90th anniversary celebration.

Contact the National Scouting Museum - Philmont Scout Ranch for more information on commissioning Susan for your custom artwork project.

